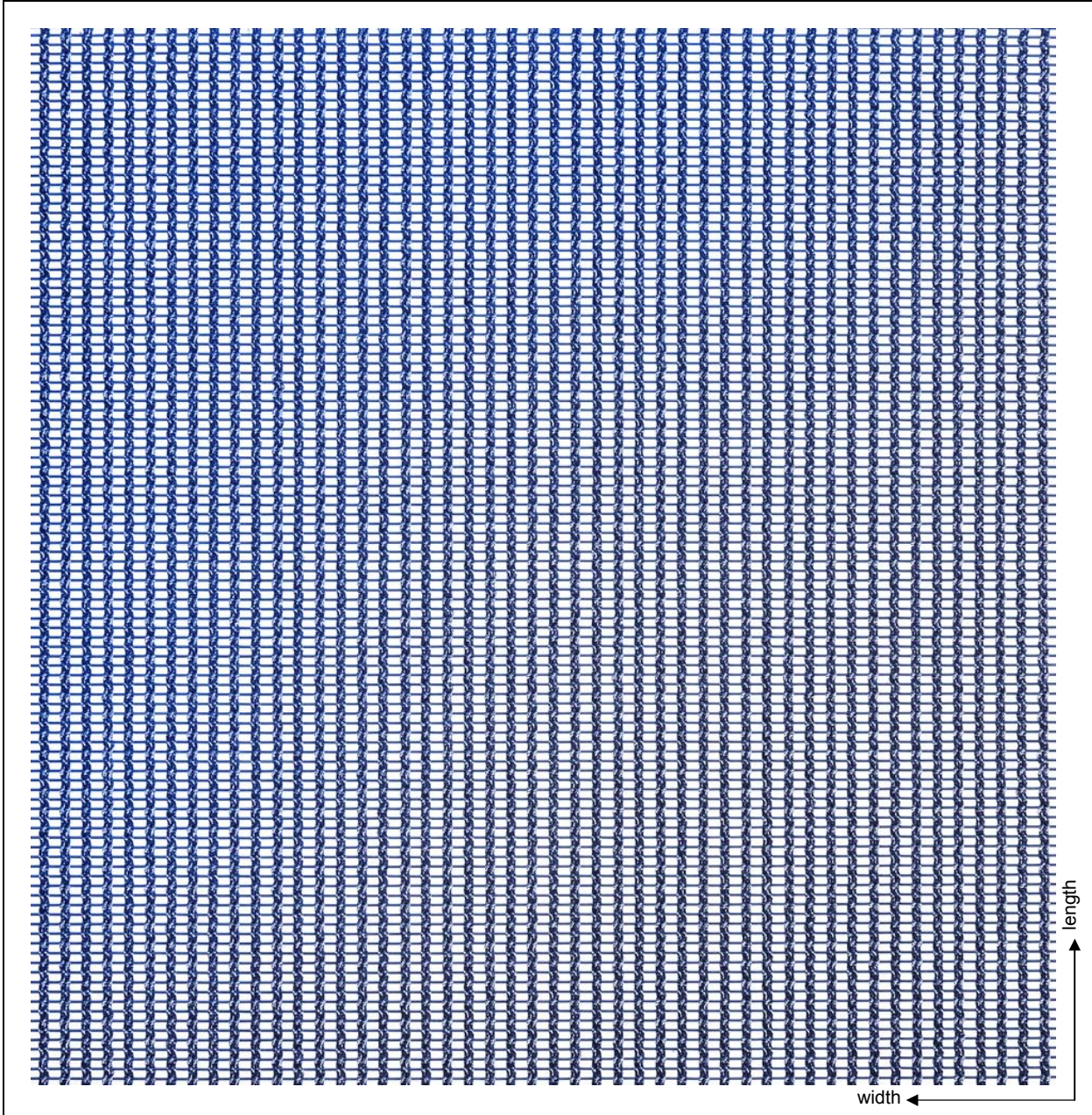


# LT 70



type of mesh	aperture (mm)	wire diameter (mm)	weight (kg/m <sup>2</sup> )	open area (%)	standard width (m)
<b>Miniflex</b>	<b>2 x 0.93</b>	<b>3 x 0.45/0.5</b>	<b>2.25</b>	<b>37</b>	<b>2.0</b>
<b>application</b>			<b>mounting</b>		
<ul style="list-style-type: none"> <li>• interior design</li> <li>• claddings of walls and ceilings</li> <li>• partitions</li> </ul>			<ul style="list-style-type: none"> <li>• tensioning selvedge</li> <li>• eye rivet</li> <li>• glue framing</li> <li>• slotted tube</li> <li>• angled framing</li> </ul>		